

Download CIPHERConnect to Windows Mobile Phones

Prior to Use of CIPHERConnect

CIPHERConnect is a COM-to-key utility designed for CipherLab cordless scanners to work as an input device for the Windows Mobile phone, enabling intensive data collection via Bluetooth Serial Port connection.

CIPHERConnect is ready for purchase and downloadable via the Windows Marketplace for Mobile. Go on-line and browse the market for the applications:

-  **CIPHERConnect Pro** A paid version with full support
-  **CIPHERConnect Lite** A free trial version
-  **CIPHERConnect Demo** A demo data processing utility

Follow the instructions below for the Download and Update on the mobile phone.

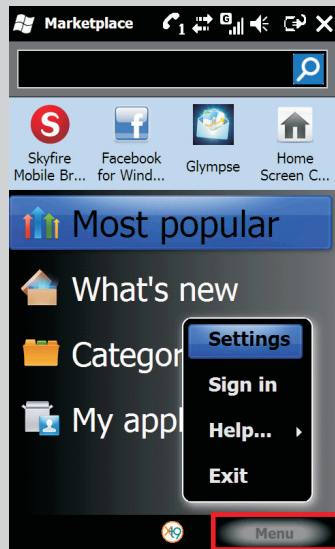
- Note** We suggest that you download the Lite version for evaluation before purchasing the Pro version.
- Note** If Bluetooth Human Interface Device Profile (BT HID) is activated on the scanner, CIPHERConnect will then become inapplicable.

Download and Update

Go to **Start | Marketplace**.

1

Tap **Menu | Settings**.



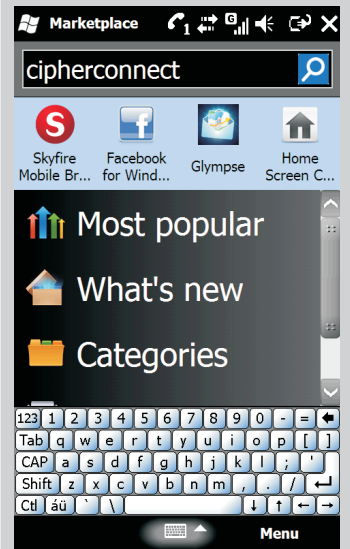
2

Choose region **United States - English** for catalog, and then tap **Save**.



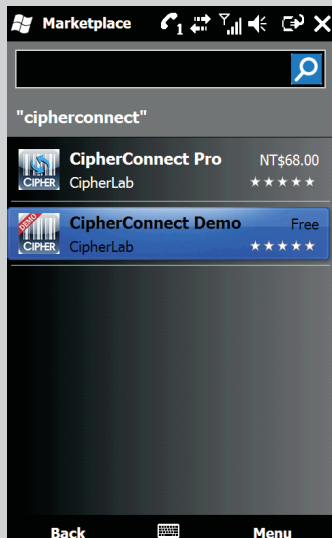
3

Type "cipherconnect" in the text field, and then tap [Enter].



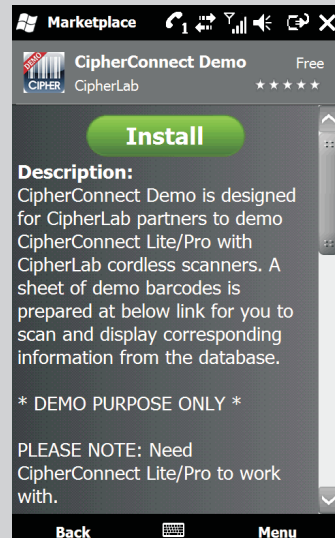
4

The search result (e.g. **CIPHERConnect Demo**) is displayed. Tap it to continue.



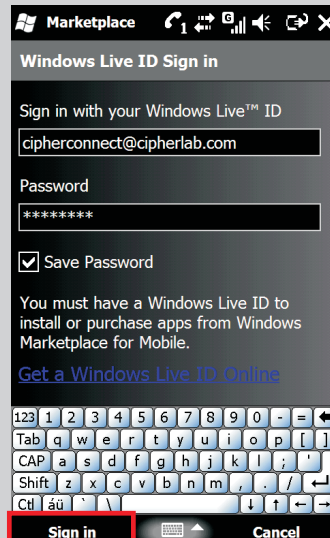
5

A brief description of the application is shown. Tap [Install].



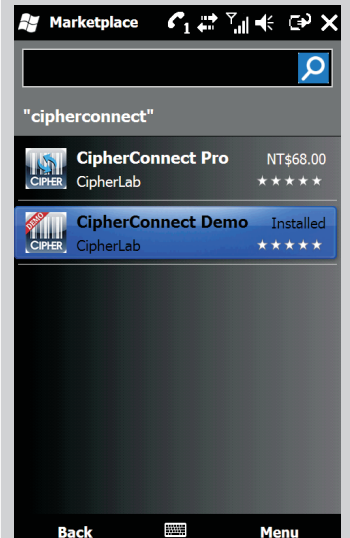
6

Input your Windows Live ID info, and then tap **Sign in** to download the application.



7

Once the download process is completed, the message "Installed" is displayed.



8



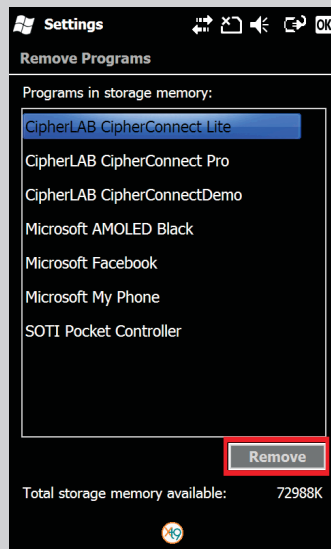
For the purchase of **CipherConnect Pro**, you must complete the online order process.

On-line update for all the **CipherConnect** downloads is supported. Follow the on-screen instruction to complete the update.

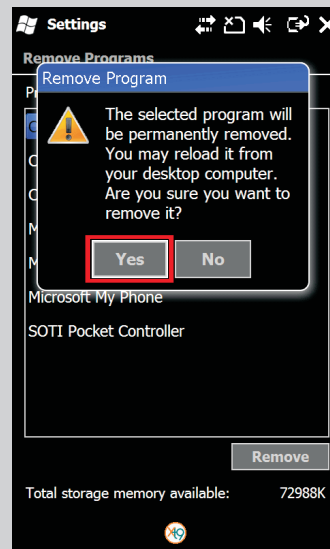


To uninstall **CipherConnect**, Go to **Start | Settings | System | Remove Programs**.

Select **CipherConnect Lite** from the program list, and then tap [Remove].



Tap [Yes] to confirm.



Configure CipherConnect for Windows Mobile Phones

Preparation for Scanner

CipherConnect is ready for use after successful downloads via the Windows Marketplace for Mobile. Working with CipherLab cordless scanners, it can deliver optimal performance.

- 1 Turn on the scanner, and wait until the LED indicator becomes flashing blue.
- 2 Set the output interface as "BT SPP Slave".
- 3 Specify the PIN code for authentication.
- 4 The scanner is active at power-on for two minutes by default, waiting for a connection request from the mobile phone. Follow the instructions below for Connection and Configuration on the mobile phone.

Note The mobile platform must be Windows Mobile 6.x; the 1660 firmware must be version 1.33 or later.

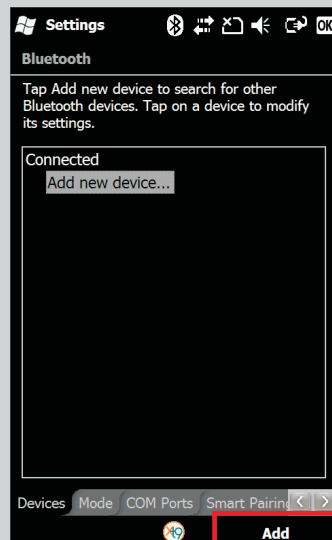
Note You may use a preset PIN code with the scanner. Yet, dynamic input of PIN is also supported. Refer to a separate scanner user guide for complete settings.

Note We suggest that you remove the Lite version before using of the Pro version.

Connection and Configuration

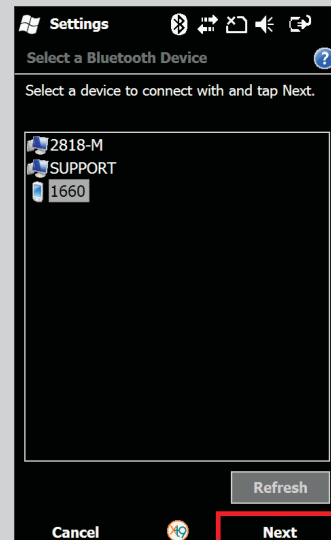
Go to **Start | Settings** and select **Bluetooth**.

Tap [Add new device...] or **Add** on the taskbar to find nearby Bluetooth devices.



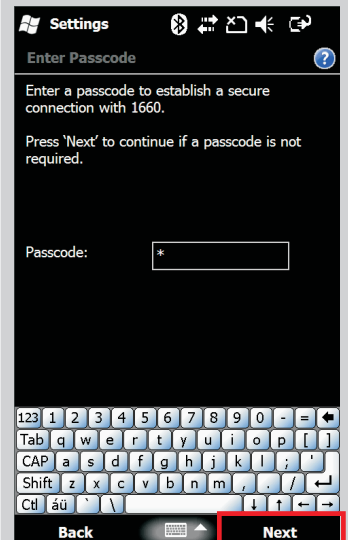
1

Select CipherLab scanner (e.g. 1660), and then tap **Next**.



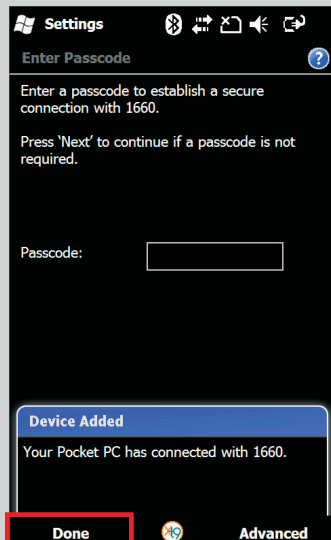
3

Input the preset PIN code of the scanner, and then tap **Next**.



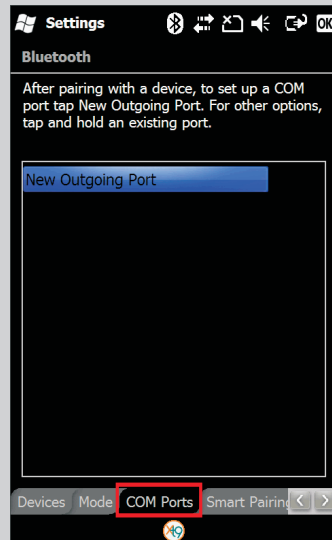
4

Tap **Done**.



5

On the COM Ports tab, tap [New Outgoing Port].



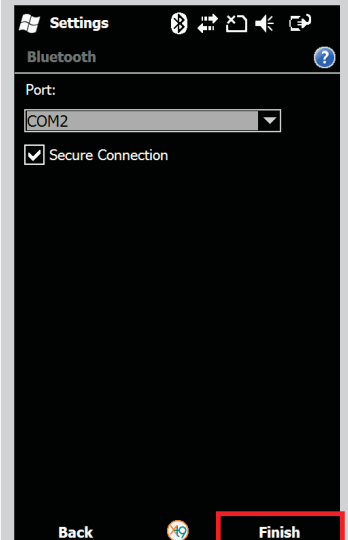
6

Select the scanner, and then tap **Next**.



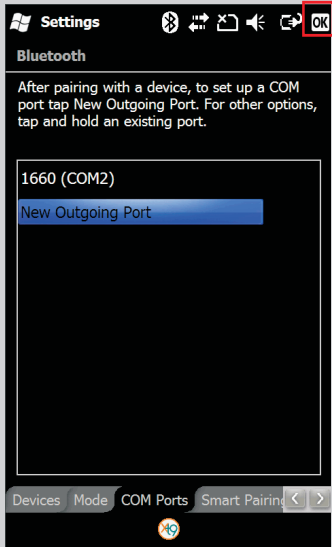
7

Select a COM port (e.g. COM2), and then tap **Finish**.



8

The selected COM port is displayed next to the scanner. Tap [OK].



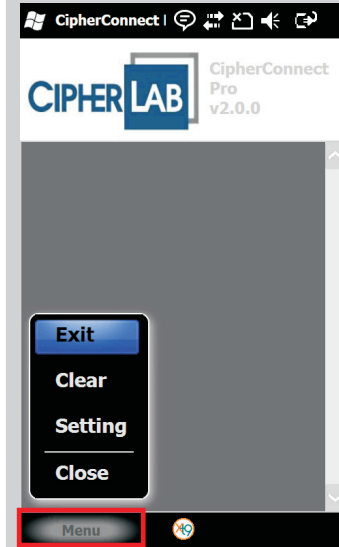
9

Go to **Start | CipherConnect Pro**.



10

Tap **Menu** to display the pop-up menu.



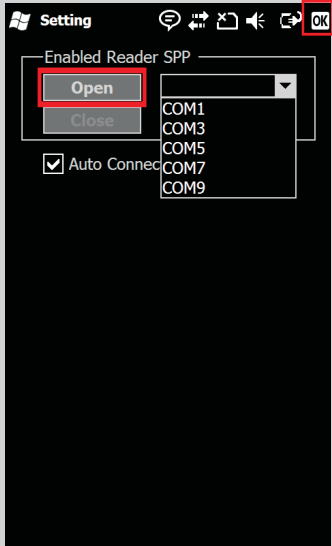
11



Available options in Menu:

- ▶ Select [Exit] to leave the program.
- ▶ Select [Clear] to clear all scanned data displayed on the screen.
- ▶ Select [Setting] to set up the parameters.
- ▶ Select [Close] to hide the program.

For initial operation, select [Setting] and tap [Open]. Make sure the COM port is correct and tap [OK].



12



We suggest that you enable [Auto Connect]. After initial connection, it can automatically open the COM port upon execution, or resume connection once connection error is resolved.

With Transmit Buffer enabled on the scanner, you can continue scanning data even when getting out of range.



Connection Errors:

- Error** The scanner is getting out of range.
Action Get back to range ASAP.

- Error** The scanner becomes inactive after standing by for two minutes at power-on.
Action Press the blue key to wake up the scanner.

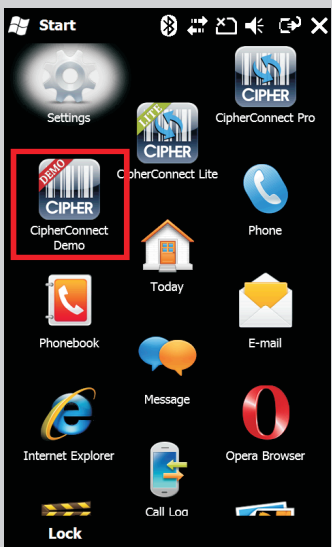
- Error** The scanner automatically shuts down after ten-minute idle.
Action Press the [Power] key to turn it on.

Trigger the scanner to read barcodes and data collected will be displayed on the screen.



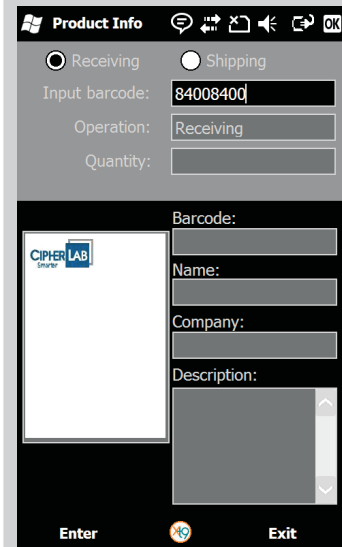
13

Go to **Start | CipherConnect Demo**.



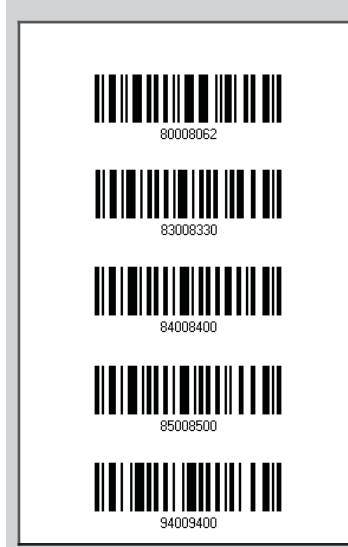
14

Trigger the scanner to read a testing barcode.

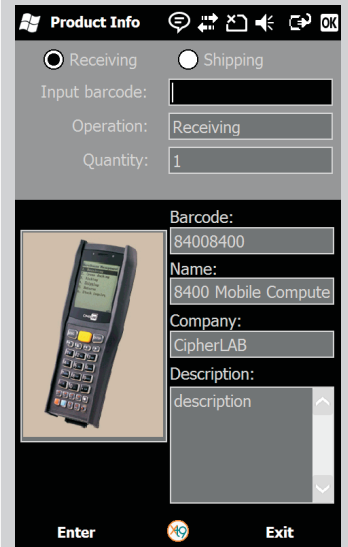


15

Testing Barcodes for Use with Demo Database



Take Receiving Operation for example. The barcode input will bring up product details from the demo database.



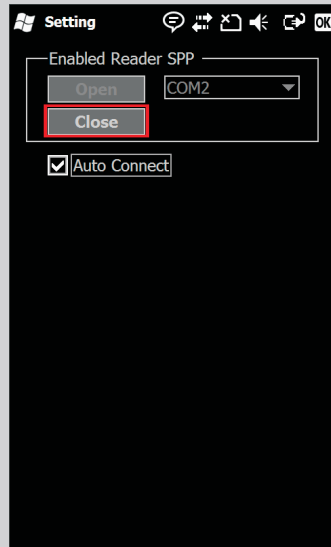
16



CipherConnect Pro will simultaneously receive the collected barcode data in an application.

CipherConnect Lite is a free trial version and will add additional characters "CipherLab" to the data.


To stop data collection, tap [Close] in [Setting] to close the COM port.




17



Tip

When the program is minimized, tap the icon  on the top of the screen.

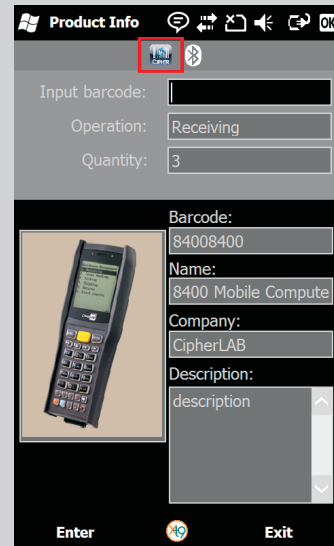
Then tap  on the pop-up menu to select the program in the active program list.

See the following two screenshots.

Tap the icon on the top of the screen, and then tap the icon on the pop-up menu.



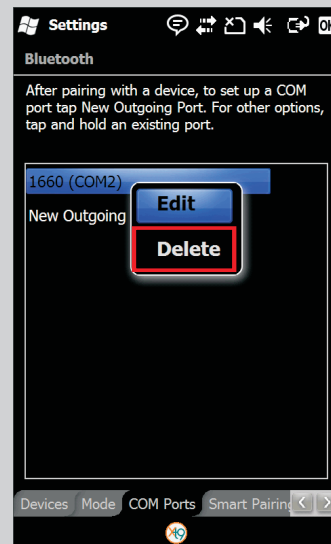
Select the program icon in the active program list.



Tip

To remove a connection, see the following two steps.

Step 1:
First on the COM Ports tab, tap and hold the COM port (COM2), select [Delete].



Step 2:
Then on the Devices tab, tap and hold the scanner (1660), select [Delete].



Copyright © 2010
CipherLab Co., Ltd.